

GUSTAV KLIMT (1862-1918)

"I am not interested in myself as a subject for painting, but in others, particularly women..."

BIOGRAPHY

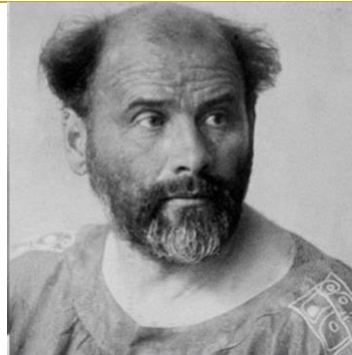
- Austrian artist
- **Early Work:** Attended vocational art school in Vienna- painter & draughtsman
- Realistic portraits and classical imagery
- **1894:** Turning point- commissioned to paint the Great Hall ceiling at the University of Vienna by the Austrian Ministry of Education (paintings very controversial)
- **1897:** Vienna Secession
- 19 Artists including Klimt (the first president)
- "Ver Sacrum" Periodical - "Sacred Spring;" wanted to create/promote modern art
- **Secession Motto:** *"To each age its art, to art its freedom."* (Rogoyska, Jane, and Bade, Patrick. Gustav Klimt. New York: Parkstone International, 2011)
- **Style:**

"Late Symbolism and Art Nouveau, though a range of other influences from, for example, Impressionist, Byzantine and Mycenaean art may be detected" (Vergo, Peter. "Klimt, Gustav." *Grove Art Online*. 2003.)

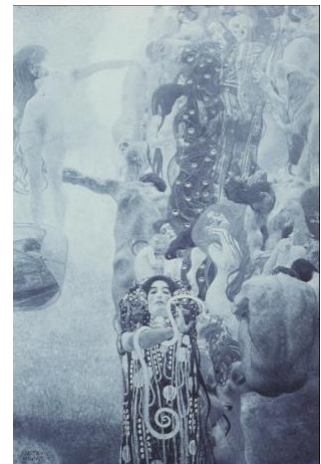
- **Later work:**
- Mostly portraiture and landscapes

CRITICAL RECEPTION

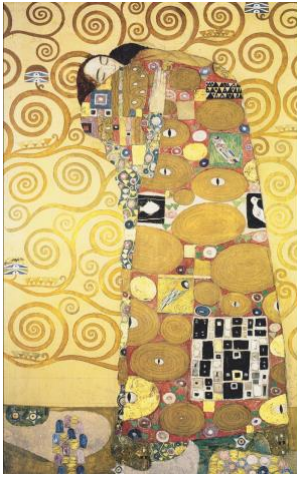
- *Philosophy* (left), *Medicine* (right), like much of Klimt's work, received backlash; described as too pornographic/vulgar.



PORTRAIT OF GUSTAV KLIMT



1. KLIMT, GUSTAV, 1862-1918. C.1900. UNIVERSITY PANEL: PHILOSOPHY. [HTTPS://LIBRARY-ARTSTOR-ORG.EZPROXY.LIB.DAVIDSON.EDU/ASSET/ARTSTOR_103_41822000675619](https://library-artstor-org.ezproxy.lib.davidson.edu/asset/artstor_103_41822000675619).
2. KLIMT, GUSTAV, 1862-1918. C.1898. UNIVERSITY PANEL: MEDICINE. [HTTPS://LIBRARY-ARTSTOR-ORG.EZPROXY.LIB.DAVIDSON.EDU/ASSET/ARTSTOR_103_41822000675577](https://library-artstor-org.ezproxy.lib.davidson.edu/asset/artstor_103_41822000675577).



THE EMBRACE (1905-1911)

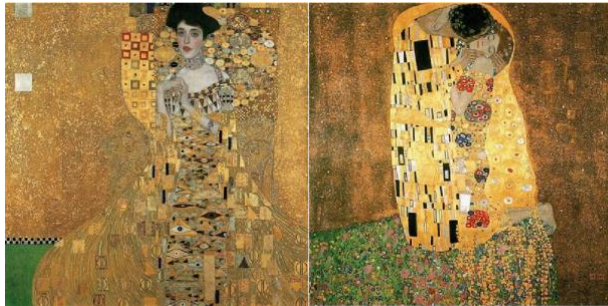
- Detail from the Palais Stoclet Frieze in Brussels
- Art Nouveau Style
- Mosaic made from- “precious metals, semi-precious stones, enamel, and CORAL” (Rogoyska, Jane, and Bade, Patrick. *Gustav Klimt*. New York: Parkstone International, 2011).
- “The Tree of Life” (right)- another Stoclet Frieze mosaic

ABSTRACTION IN THE EMBRACE

- Described as a Byzantine/Golden style
- Style inspired by Japanese and Egyptian art as well
- Eye motif



Tree of Life, c. 1905-1908.
155 x 182 cm.
Museum für Angewandte Kunst, Vienna.



POURTRAIT OF ADELE BLOCH-BAUER I

THE KISS

SIMILAR WORKS

- “Portrait of Adele Bloch-Bauer I” (left) - 1907 (Gustav Klimt. 1907. Adele Bloch-Bauer I. painting. Place: Neue Galerie New York.)
- “The Kiss” (right)- 1907/1908 (The Kiss. Place: Österreichische Galerie Belvedere, Vienna)
- “Bride” (below; late work)- 1918 (Gustav Klimt. 1918. The Bride. painting. Place: Österreichische Galerie Belvedere.)

5 SCHOLARLY ARTICLES

- "Fulfillment." *Grove Art Online*. ; Accessed 19 Feb. 2020.
- Makela, Maria, Beth Irwin Lewis, and Cynthia Prossinger. "Secession." *Grove Art Online*. 2003; Accessed 19 Feb. 2020. <https://www.oxfordartonline.com/groveart/view/10.1093/gao/9781884446054.001.0001/oa0-9781884446054-e-7000077304>.
- Murr, Beate. “I Knew Right from the Start That the Whole Thing Would Be Damned Expensive’ - Gustav Klimt’s Cartoons for the Stoclet Frieze: Their Creation, Execution, and Conservation, Part II.” *Restaurator* 35, no. 1 (March 2014): 25–45. doi:10.1515/res-2014-0003.
- Rogoyska, Jane, Patrick Bade, and Gustav Klimt. 2011. *Gustav Klimt*. New York: Parkstone International. <http://search.ebscohost.com/login.aspx?direct=true&db=lebk&AN=436452&site=ehost-live>.
- Vergo, Peter. "Klimt, Gustav." *Grove Art Online*. 2003; Accessed 19 Feb. 2020. <https://www.oxfordartonline.com.ezproxy.lib.davidson.edu/groveart/view/10.1093/gao/9781884446054.001.0001/oa0-9781884446054-e-7000046890>.



BRIDE
(UNFINISHED)

